

# 賽馬會中樂360 十面埋伏 (中級)

劉文金、趙咏山 編曲  
譚逸昇 改編

## 【列營】威武地

(大鼓)

Musical notation for measure 1, featuring a drum part with a dynamic range from *mp* to *ff*.

Musical notation for measure 4, featuring a bass line with a dynamic range from *mp* to *f*.

Musical notation for measure 9, featuring a triplet and a *rit.* marking.

Musical notation for measure 13, featuring a tempo change to *行板* and a guitar part labeled (琵琶).

Musical notation for measure 19, featuring a melodic line with a dynamic range from *mp* to *f*.

Musical notation for measure 23, featuring a bass line with a dynamic range from *f* to *mp*.

Musical notation for measure 28, featuring a tempo change to *行板* and a violin part labeled (二胡).

Musical notation for measure 34, featuring a melodic line with a dynamic range from *mp* to *f*.

Musical notation for measure 39, featuring a bass line with a dynamic range from *mp* to *f*.

由慢漸快

44

*ff*

45

【吹打】 自由 (大提琴)

3

*p*

53

pizz. 中速

*p*

59

65

*mf*

69

*f*

73

77

arco rit.

*p*

81

【埋伏】 由慢漸快

4 14

*sfp* *p*

101 稍漸慢  
(中胡)

Musical notation for measure 101, starting with a treble clef and a key signature of one sharp (F#). The notation includes a melodic line with eighth notes and rests, and a bass line with a half note and rests. Performance markings include *pizz.* and *arco* above the staff, and *mf* below the staff.

105

Musical notation for measure 105, starting with a bass clef and a key signature of one sharp (F#). The notation includes a bass line with eighth notes and rests. Performance markings include *f* below the staff.

109

Musical notation for measure 109, starting with a bass clef and a key signature of one sharp (F#). The notation includes a bass line with eighth notes and rests. Performance markings include *ff* below the staff.

113

Musical notation for measure 113, starting with a bass clef and a key signature of one sharp (F#). The notation includes a bass line with eighth notes and rests, featuring accents (>) over the notes. Performance markings include *mf* and *f* below the staff.

117

Musical notation for measure 117, starting with a bass clef and a key signature of one sharp (F#). The notation includes a bass line with chords and rests.

121

Musical notation for measure 121, starting with a bass clef and a key signature of one sharp (F#). The notation includes a bass line with chords and rests. Performance markings include *ff* and *f* below the staff. The tempo marking "稍慢" is placed above the staff.

【小戰】、【大戰】

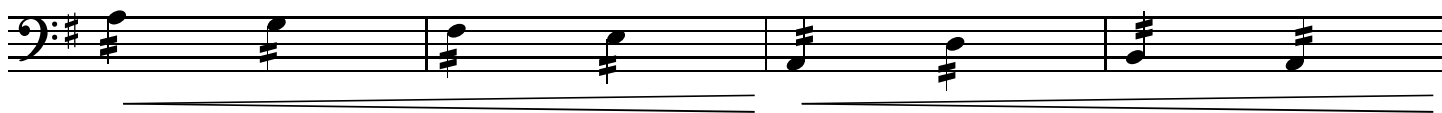
126

Musical notation for measure 126, starting with a bass clef and a key signature of one sharp (F#). The notation includes a bass line with eighth notes and rests. Performance markings include *f* below the staff. The tempo marking "突轉快板" is placed above the staff.

133

Musical notation for measure 133, starting with a bass clef and a key signature of one sharp (F#). The notation includes a bass line with eighth notes and rests. Performance markings include *mf* below the staff.

140



144



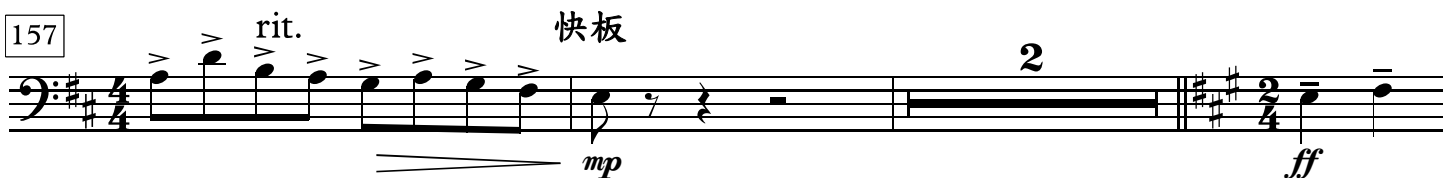
148



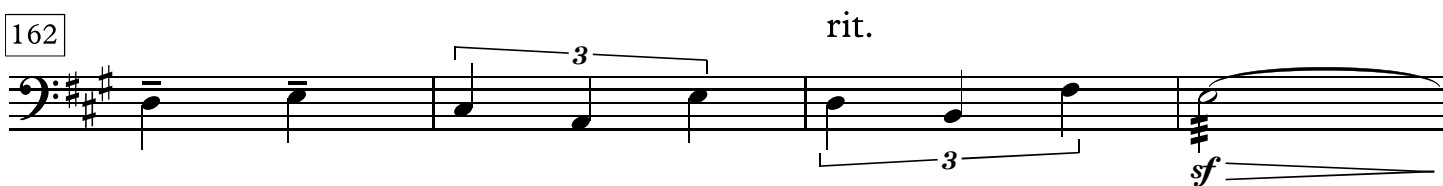
153 自由



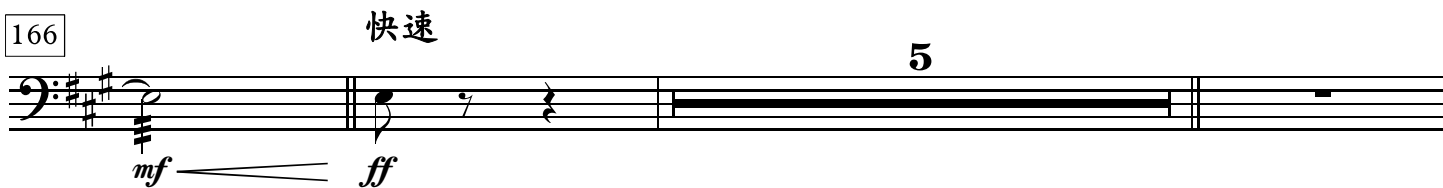
157



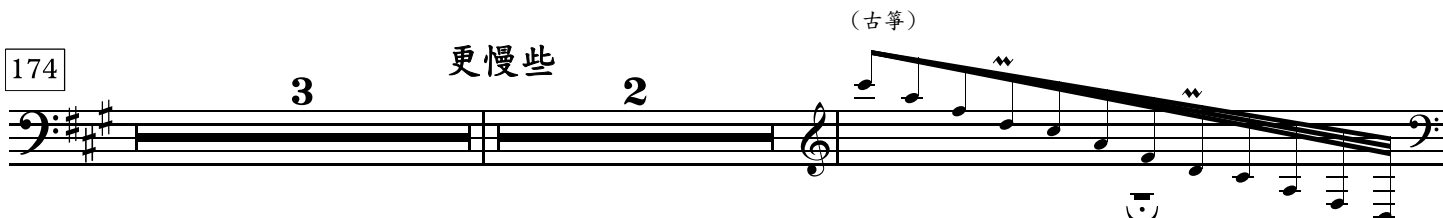
162



166

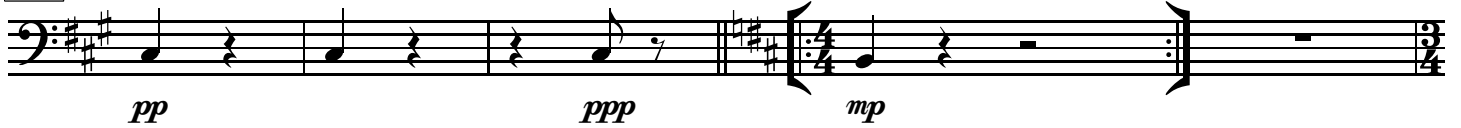


174



【烏江】  
中速稍慢

180



185



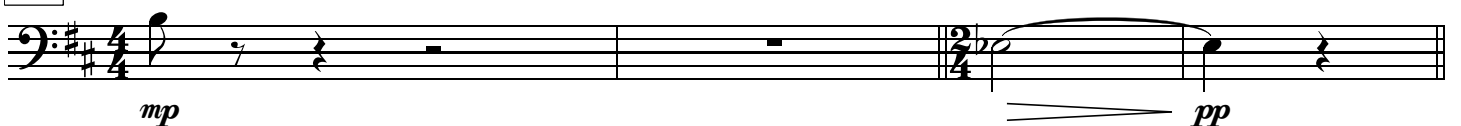
190



194



198



【奏凱】

202



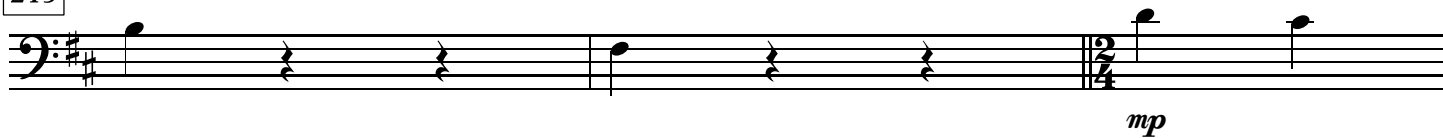
206



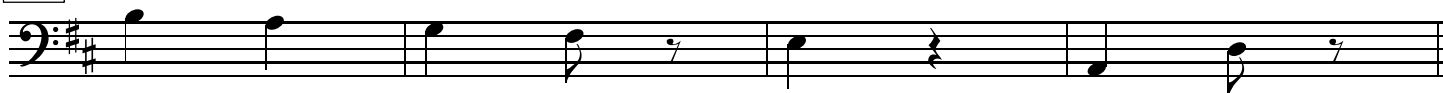
211



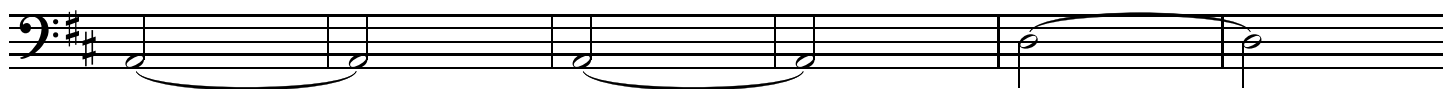
215



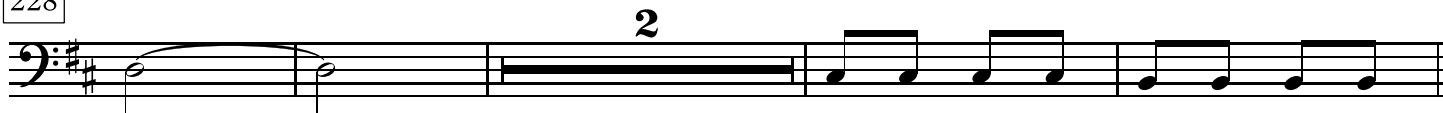
218



222



228



234

molto rit.

慢



239



244



249

