

月兒高

大阮

古 曲
 彭修文 改編

(一) 海島冰輪

Largo ♩ = 28 深遠

Musical notation for the first part of '海島冰輪'. It starts in bass clef with a 4/4 time signature. The first measure has a half note G2 with a fermata, marked *p*. The second measure has a half note G2 with a fermata, marked *f*. The third measure has a half note G2 with a fermata, marked *mf*. There are two double bar lines with repeat signs and a '2' above the first one.

Musical notation for measures 6-9 of '海島冰輪'. Measure 6 starts with a half note G2, marked *f*. Measure 7 has a half note G2. Measure 8 has a half note G2. Measure 9 has a half note G2. The tempo marking '快起漸慢' (Allegro ritardando) is above the staff, and 'accel.' is below the staff.

Musical notation for measures 10-13 of '海島冰輪'. Measure 10 has a half note G2, marked *vib.*. Measure 11 has a half note G2, marked *mp*. Measure 12 has a half note G2, marked *cresc.*. Measure 13 has a half note G2, marked *dim.*. The tempo marking '慢起漸快' (Adagio accelerando) is above the staff, and 'rit.' is below the staff.

(二) 江樓望月

14 Adagio con grazioso

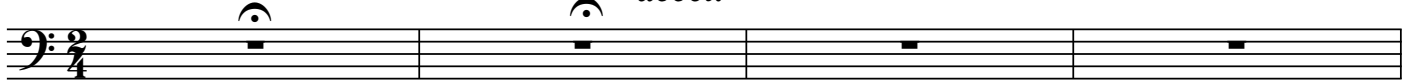
Musical notation for measures 14-17 of '江樓望月'. Measure 14 has a half note G2. Measure 15 has a half note G2. Measure 16 has a half note G2. Measure 17 has a half note G2. The dynamic marking *p* is below the staff.

Musical notation for measures 18-21 of '江樓望月'. Measure 18 has a half note G2. Measure 19 has a half note G2. Measure 20 has a half note G2. Measure 21 has a half note G2. The dynamic marking *mp* is below the staff.

Musical notation for measures 22-25 of '江樓望月'. Measure 22 has a half note G2. Measure 23 has a half note G2. Measure 24 has a half note G2. Measure 25 has a half note G2. The dynamic markings *mp*, *p*, and *dim.* are below the staff.

(四) 銀蟾吐彩

62 *Agitato tempo rubato* 情緒激動 *accel.*



66 *a tempo*



(五) 秋露滿天

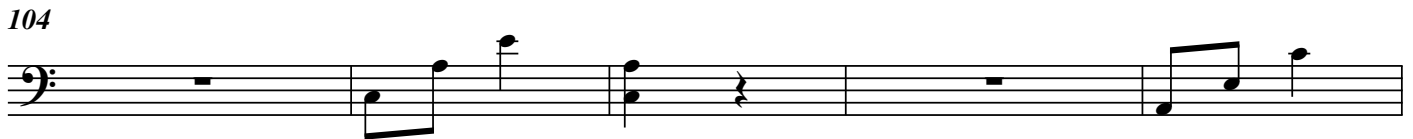
84 慢起漸快



89 *rit.*



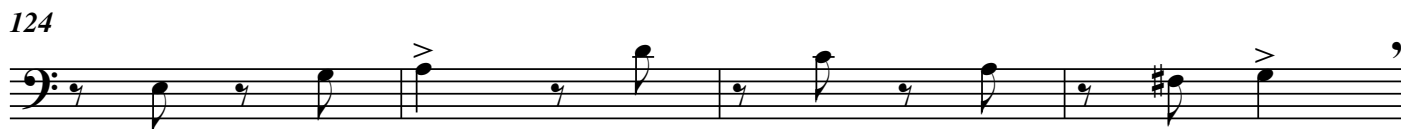
97 *piu mosso*



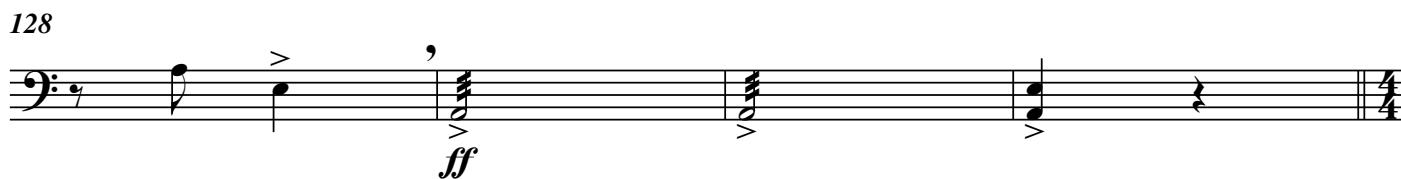
119



124




128




(六) 素娥旖旎

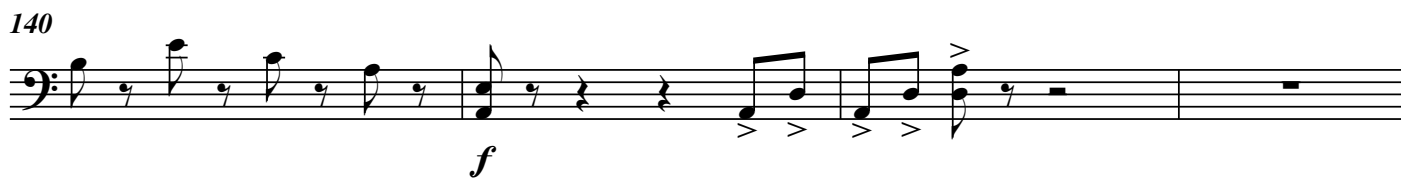
132 **Appassionato con forza**



136



140



204 *poco a poco cresc.*

stretto



208

meno mosso



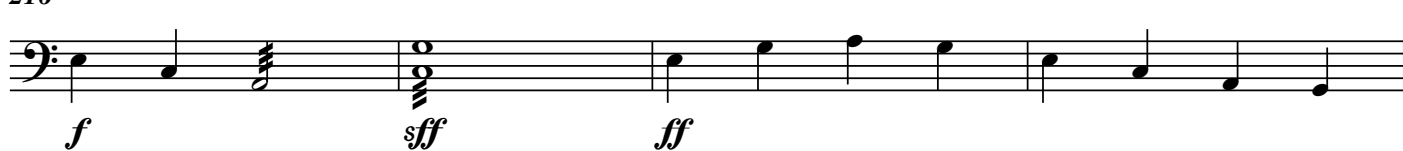
212

rit.



216

allargando



220

lunga morendo

